



Shelby County
TN




MARK LUTTRELL
Chairman

VANECIA KIMBROW
Secretary

PATRICIA POSSEL
FRANK UHLHORN
ANDRE WHARTON
Members

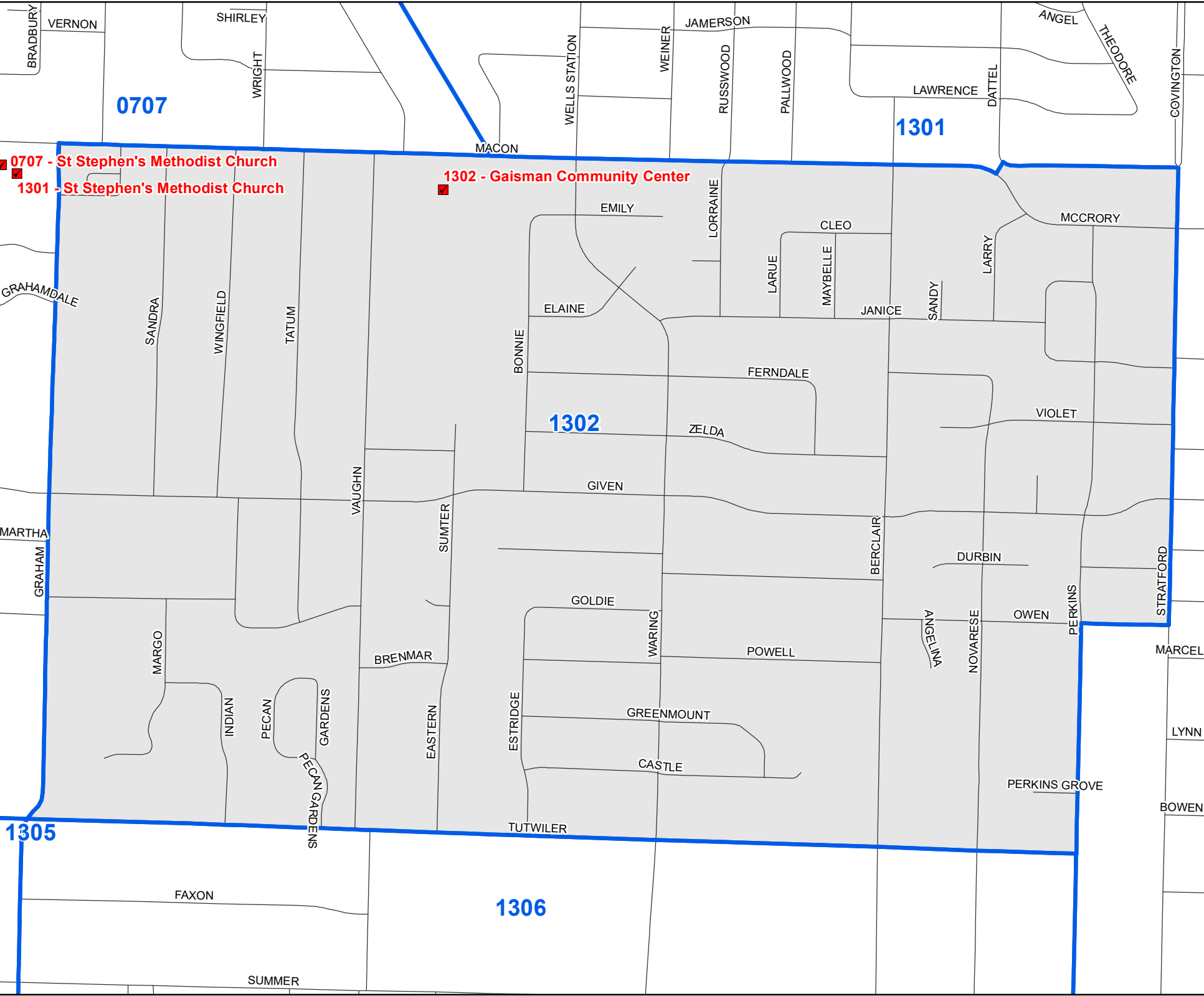
**1302
Precinct
Map**

Legend

-  Polling Location
-  Precincts
-  Streets



Last Updated:
11/18/2025



0707 - St Stephen's Methodist Church
1301 - St Stephen's Methodist Church

1302 - Gaisman Community Center